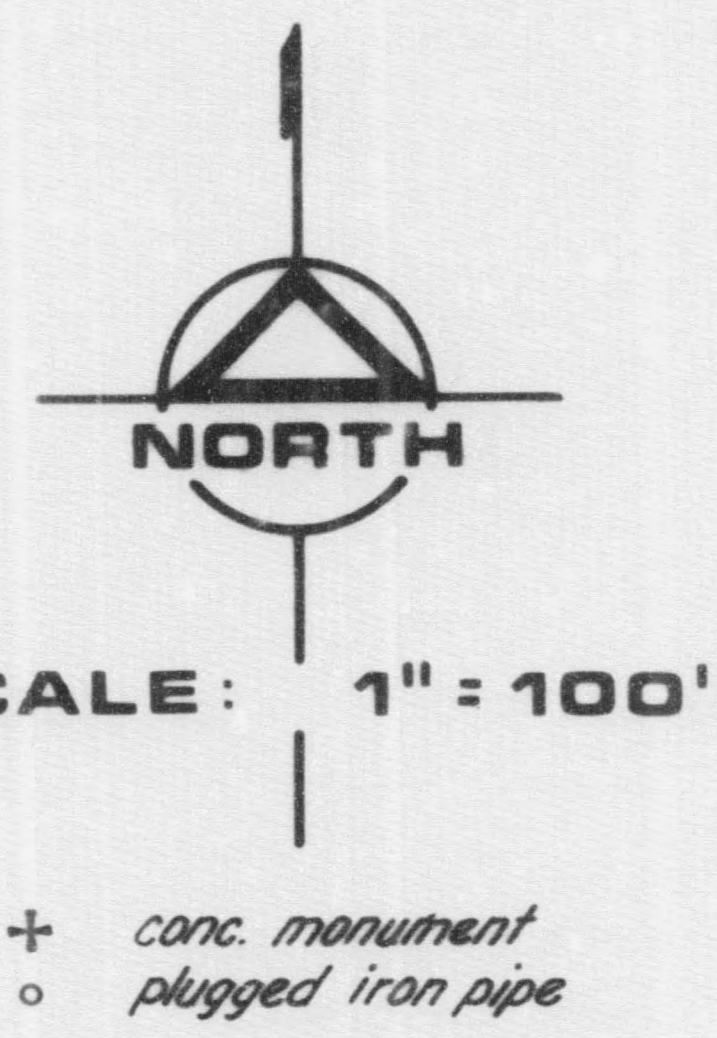
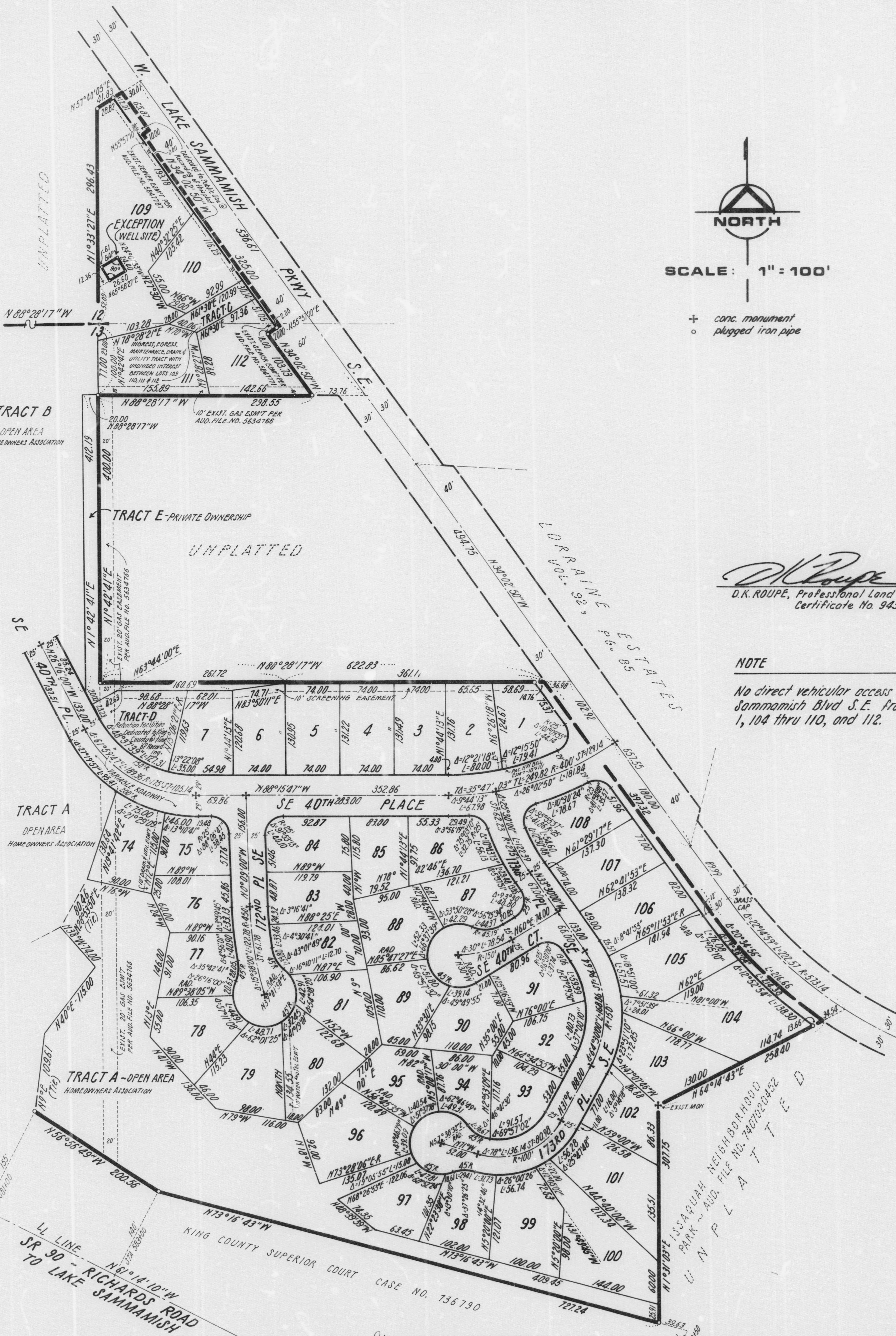


FORTY-ONE POINT FIVE SECTIONS 12 & 13, TWP. 24 N., R. 5 E., W.M. KING COUNTY, WASHINGTON

106-36



+ conc. monument
o plugged iron pipe

D.K. Roupe
D.K. ROUPE, Professional Land Surveyor
Certificate No. 9435

NOTE
No direct vehicular access to Lake Sammamish Blvd S.E. from Lots 1, 104 thru 110, and 112.

