

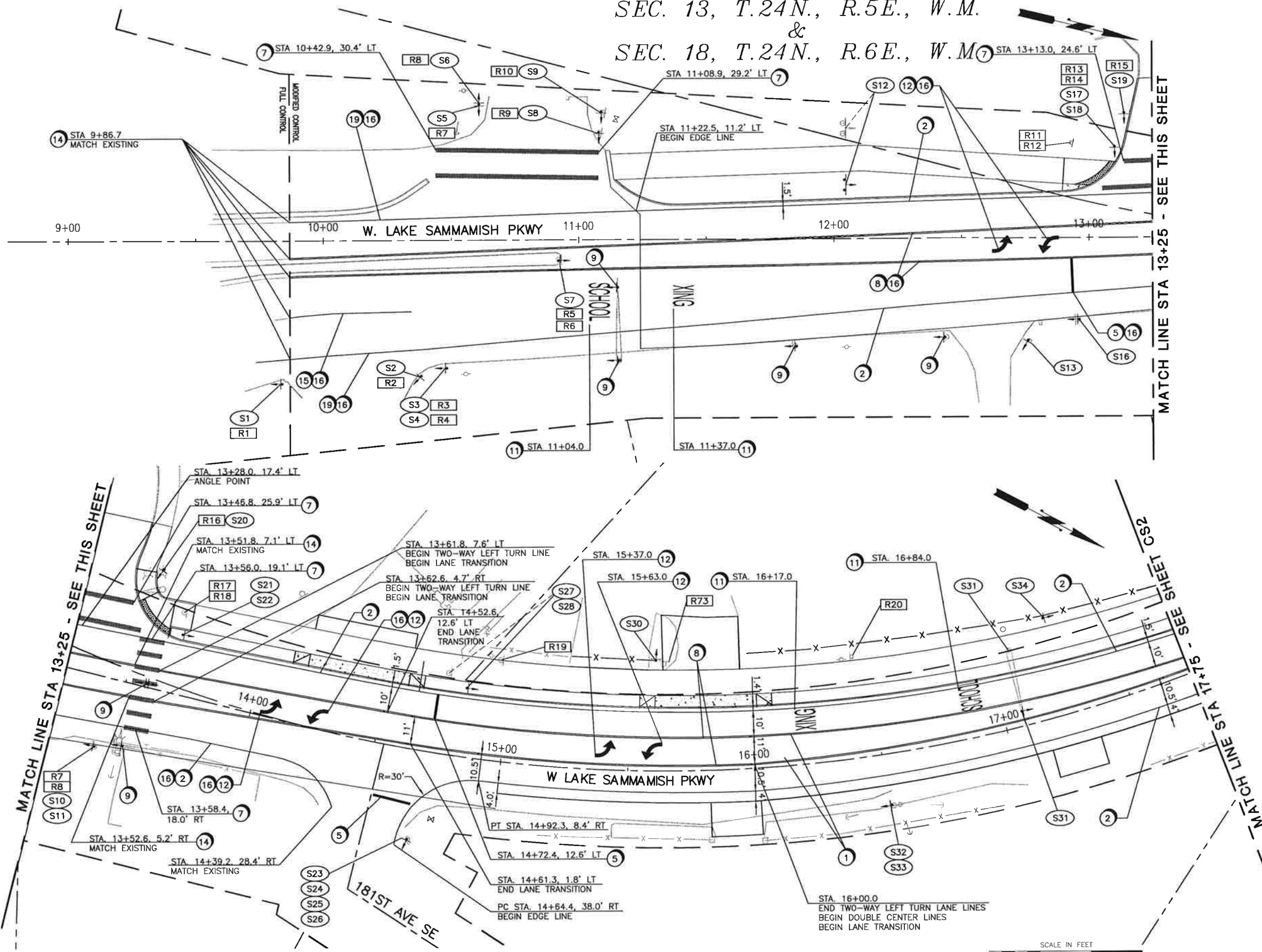
SEC. 13, T.24N., R.5E., W.M.
&
SEC. 18, T.24N., R.6E., W.M.

SIGN GENERAL NOTES:

1. ALL CONFLICTING CHANNELIZATION SHALL BE REMOVED.
2. CHANNELIZATION DESIGN, PAVEMENT MARKINGS, AND ALL SIGNAGE SHALL BE PER THE COB DESIGN MANUAL (APRIL 11, 2011), CURRENT WSDOT STANDARD PLANS, AND THE 2009 MANUAL ON UNIFORM TRAFFIC CONTROL DEVICES.
3. ALL RAISED PAVEMENT MARKERS SHALL CONFORM TO COB STANDARD DWG TE-5.
4. TRAFFIC SIGNAL LOOP DETECTOR PAVEMENT MARKINGS ARE SHOWN ON SHEET TS1.
5. ALL POST-MOUNTED SIGN INSTALLATION SHALL BE PER COB STANDARD DWG TE-21 UNLESS OTHERWISE NOTED.
6. ALL POST-MOUNTED STREET NAME SIGNS SHALL CONFORM TO COB STANDARD DWGS TE-22A, TE-22B, TE-23A, TE-23B, AND TE-24.
7. SEE SHEETS CS8-CS9 FOR SIGN SCHEDULES AND DETAILS

CONSTRUCTION NOTES:

- 1 DOUBLE CENTER LINE PER COB STANDARD DWG TE-4A.
- 2 4" WHITE INLAID REFLECTORIZED THERMOPLASTIC EDGE LINE.
- 3 NOT USED THIS SHEET.
- 4 NOT USED THIS SHEET.
- 5 12" PLASTIC STOP LINE.
- 6 NOT USED THIS SHEET.
- 7 PLASTIC CROSSWALK PER COB STANDARD DWG TE-7.
- 8 TWO-WAY LEFT TURN LINE PER COB STANDARD DWG TE-4A.
- 9 EXISTING SIGN TO REMAIN.
- 10 NOT USED THIS SHEET.
- 11 8" HIGH TRAFFIC LETTERING PER WSDOT STANDARD PLAN M-80.10-01.
- 12 TWO-WAY LEFT TURN ARROWS PER COB STANDARD DWG TE-6, DETAIL C.
- 13 NOT USED THIS SHEET.
- 14 RPM'S WILL TIE-IN TO EXISTING PAINT AT MATCH POINT.
- 15 8" WHITE LINE (PAINT OR PLASTIC, MATCH EXISTING).
- 16 INSTALL OVER EXISTING CHANNELIZATION.
- 17 NOT USED THIS SHEET.
- 18 NOT USED THIS SHEET.
- 19 4" WHITE PAINTED EDGE LINE.



**CALL 48 HOURS BEFORE YOU DIG
1-800-424-5555**

NO.	DATE	BY	APPR.	REVISIONS

Approved By
 TRANSPORTATION DESIGN MANAGER DATE
 PROJECT MANAGER DATE

CTVY DESIGNED BY JUNE 2012 DATE
 WAC DRAWN BY JUNE 2012 DATE
 MGVY CHECKED BY JUNE 2012 DATE

City of Bellevue
 TRANSPORTATION DEPARTMENT

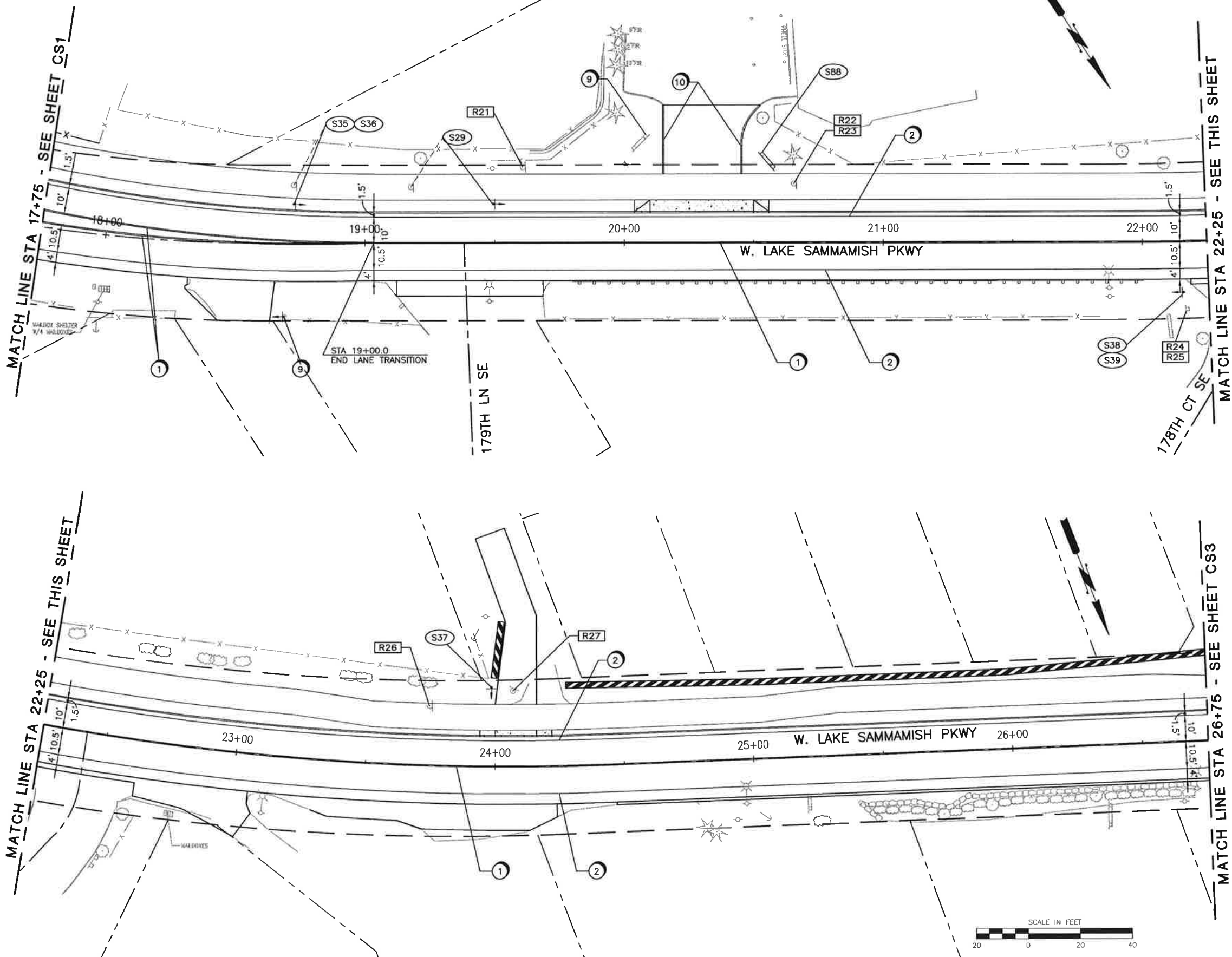
Reid Middleton
 725 134th Street SE Suite 200
 Everett, Washington 98204
 P# 425 711-3000

WEST LAKE SAMMAMISH PARKWAY IMPROVEMENTS PROJECT - PHASE 1

CHANNELIZATION AND SIGNING PLAN
 CS1 SHT 73 OF 108

08/06/2012 2:33pm I:\2512008\010 W.L.S.P. Bellevue\Design\5810-C51.dwg

SEC. 13, T.24N., R.5E., W.M.



SIGN GENERAL NOTES:

1. ALL CONFLICTING CHANNELIZATION SHALL BE REMOVED.
2. CHANNELIZATION DESIGN, PAVEMENT MARKINGS, AND ALL SIGNAGE SHALL BE PER THE COB DESIGN MANUAL (APRIL 11, 2011), CURRENT WSDOT STANDARD PLANS, AND THE 2009 MANUAL ON UNIFORM TRAFFIC CONTROL DEVICES.
3. ALL RAISED PAVEMENT MARKERS SHALL CONFORM TO COB STANDARD DWG TE-5.
4. TRAFFIC SIGNAL LOOP DETECTOR PAVEMENT MARKINGS ARE SHOWN ON SHEET S1.
5. ALL POST-MOUNTED SIGN INSTALLATION SHALL BE PER COB STANDARD DWG TE-21 UNLESS OTHERWISE NOTED.
6. ALL POST-MOUNTED STREET NAME SIGNS SHALL CONFORM TO COB STANDARD DWGS TE-22A, TE-22B, TE-23A, TE-23B, AND TE-24.
7. SEE SHEETS CSB-CS9 FOR SIGN SCHEDULES AND DETAILS

CONSTRUCTION NOTES:

- 1 DOUBLE CENTER LINE PER COB STANDARD DWG TE-4A.
- 2 4" WHITE INLAID REFLECTORIZED THERMOPLASTIC EDGE LINE.
- 3 NOT USED THIS SHEET.
- 4 NOT USED THIS SHEET.
- 5 NOT USED THIS SHEET.
- 6 NOT USED THIS SHEET.
- 7 NOT USED THIS SHEET.
- 8 NOT USED THIS SHEET.
- 9 EXISTING SIGN TO REMAIN.
- 10 YELLOW PAINTED CURB.
- 11 NOT USED THIS SHEET.
- 12 NOT USED THIS SHEET.
- 13 NOT USED THIS SHEET.
- 14 NOT USED THIS SHEET.
- 15 NOT USED THIS SHEET.
- 16 NOT USED THIS SHEET.
- 17 NOT USED THIS SHEET.
- 18 NOT USED THIS SHEET.



**CALL 48 HOURS BEFORE YOU DIG
1-800-424-5555**



06/06/2012 2:33pm I:\25\2008\010 WLSP Bellevue\Design\5810-051.dwg

NO.	DATE	BY	APPR.	REVISIONS

Approved By	
TRANSPORTATION DESIGN MANAGER	DATE
PROJECT MANAGER	DATE

KTY	JUNE 2012
DESIGNED BY	DATE
TAC	JUNE 2012
DRAWN BY	DATE
MTW	JUNE 2012
CHECKED BY	DATE

City of Bellevue
TRANSPORTATION DEPARTMENT

ReidMiddleton
728 134th Street SW Suite 200
Everett, Washington 98204
Ph: 425 741-3000

WEST LAKE SAMMAMISH PARKWAY IMPROVEMENTS PROJECT - PHASE 1

CHANNELIZATION AND SIGNING PLAN

CS2 SHT 74 OF 108

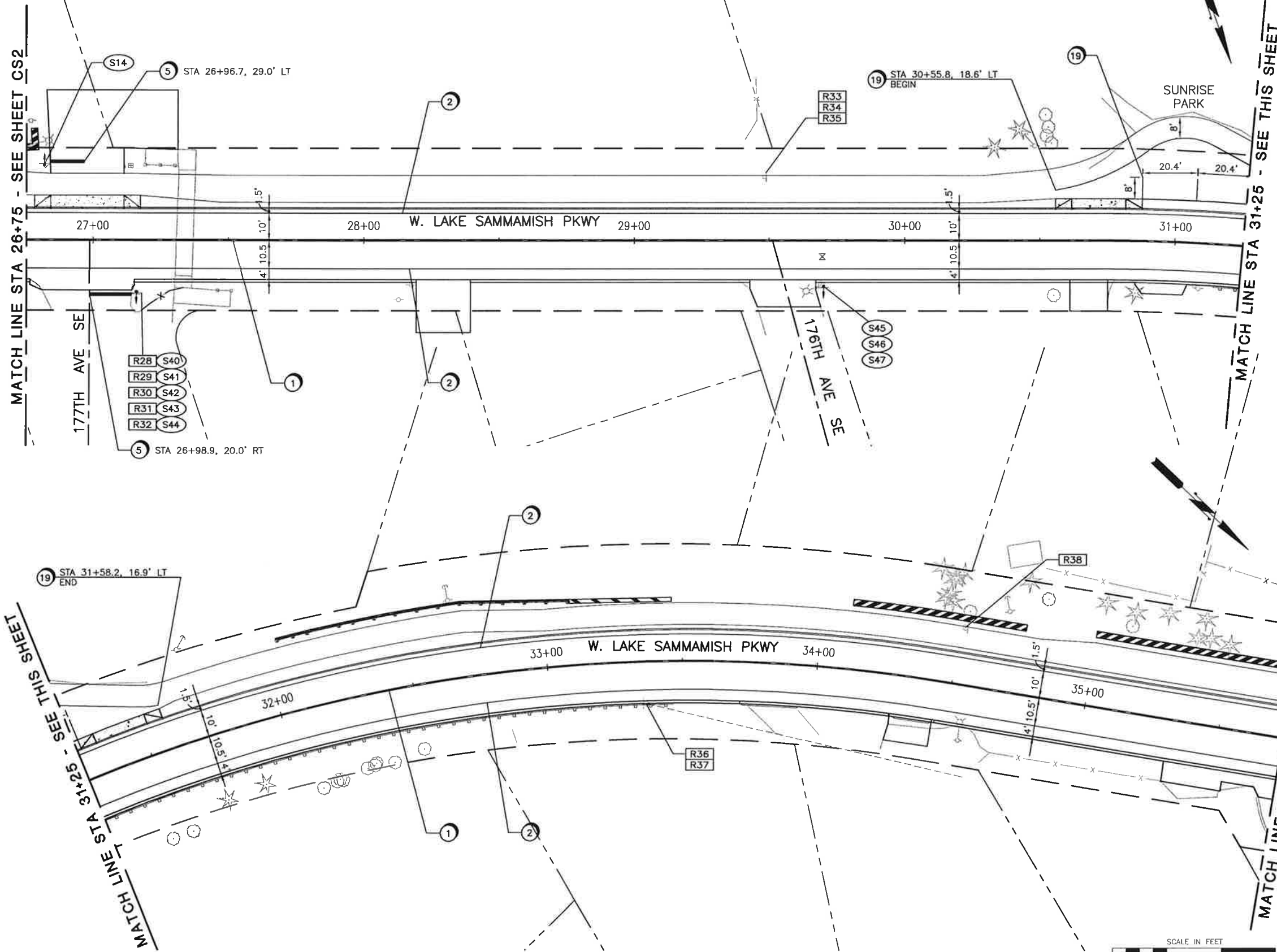
SEC. 13, T.24N., R.5E., W.M.

SIGN GENERAL NOTES:

1. ALL CONFLICTING CHANNELIZATION SHALL BE REMOVED.
2. CHANNELIZATION DESIGN, PAVEMENT MARKINGS, AND ALL SIGNAGE SHALL BE PER THE COB DESIGN MANUAL (APRIL 11, 2011), CURRENT WSDOT STANDARD PLANS, AND THE 2009 MANUAL ON UNIFORM TRAFFIC CONTROL DEVICES.
3. ALL RAISED PAVEMENT MARKERS SHALL CONFORM TO COB STANDARD DWG TE-5.
4. TRAFFIC SIGNAL LOOP DETECTOR PAVEMENT MARKINGS ARE SHOWN ON SHEET TS1.
5. ALL POST-MOUNTED SIGN INSTALLATION SHALL BE PER COB STANDARD DWG TE-21 UNLESS OTHERWISE NOTED.
6. ALL POST-MOUNTED STREET NAME SIGNS SHALL CONFORM TO COB STANDARD DWGS TE-22A, TE-22B, TE-23A, TE-23B, AND TE-24.
7. SEE SHEETS CS8-C9 FOR SIGN SCHEDULES AND DETAILS

CONSTRUCTION NOTES:

- 1 DOUBLE CENTER LINE PER COB STANDARD DWG TE-4A.
- 2 4" WHITE INLAID REFLECTORIZED THERMOPLASTIC EDGE LINE.
- 3 NOT USED THIS SHEET.
- 4 NOT USED THIS SHEET.
- 5 12" PLASTIC STOP LINE.
- 6 NOT USED THIS SHEET.
- 7 NOT USED THIS SHEET.
- 8 NOT USED THIS SHEET.
- 9 NOT USED THIS SHEET.
- 10 NOT USED THIS SHEET.
- 11 NOT USED THIS SHEET.
- 12 NOT USED THIS SHEET.
- 13 NOT USED THIS SHEET.
- 14 NOT USED THIS SHEET.
- 15 NOT USED THIS SHEET.
- 16 NOT USED THIS SHEET.
- 17 NOT USED THIS SHEET.
- 18 NOT USED THIS SHEET.
- 19 4" WHITE PAINTED EDGE LINE.



CALL 48 HOURS BEFORE YOU DIG
1-800-424-5555

06/06/2012 2:33pm I:\25\2008\010 WLSP Bellevue\Design\8810-CS1.dwg

NO.	DATE	BY	APPR.	REVISIONS

Approved By	
TRANSPORTATION DESIGN MANAGER	DATE
PROJECT MANAGER	DATE

DESIGNED BY	JUNE 2012	DATE
DRAWN BY	JUNE 2012	DATE
CHECKED BY	JUNE 2012	DATE

City of Bellevue
TRANSPORTATION DEPARTMENT

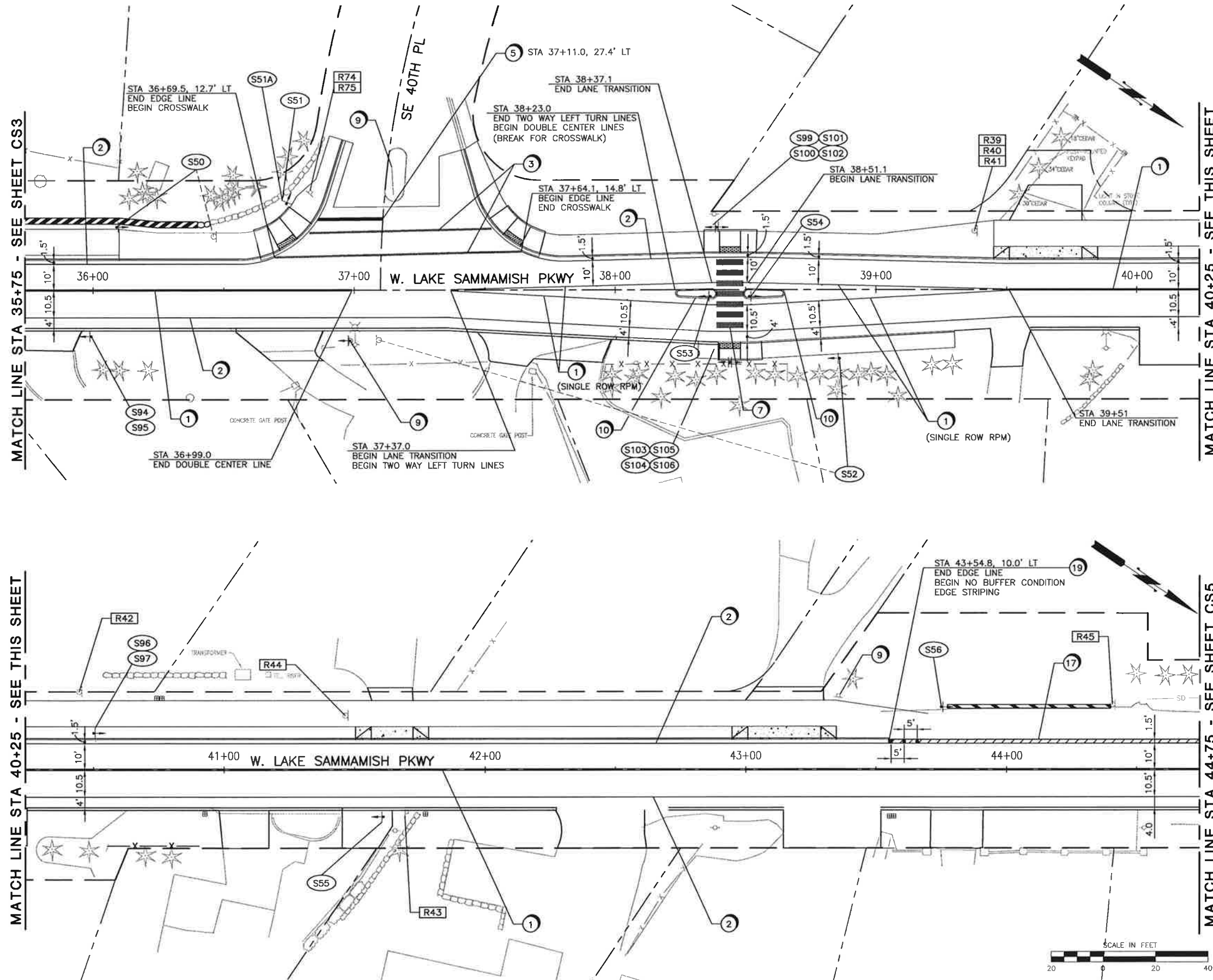
Reid Middleton
728 134th Street SW Suite 200
Everett, Washington 98204
Ph: 425 741-3800

WEST LAKE SAMMAMISH PARKWAY IMPROVEMENTS PROJECT - PHASE 1

CHANNELIZATION AND SIGNING PLAN

CS3 **SNT 75 OF 108**

SEC. 13, T.24N., R.5E., W.M.

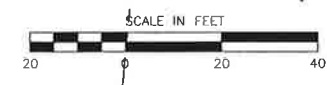


- SIGN GENERAL NOTES:**
1. ALL CONFLICTING CHANNELIZATION SHALL BE REMOVED.
 2. CHANNELIZATION DESIGN, PAVEMENT MARKINGS, AND ALL SIGNAGE SHALL BE PER THE COB DESIGN MANUAL (APRIL 11, 2011), CURRENT WSDOT STANDARD PLANS, AND THE 2009 MANUAL ON UNIFORM TRAFFIC CONTROL DEVICES.
 3. ALL RAISED PAVEMENT MARKERS SHALL CONFORM TO COB STANDARD DWG TE-5.
 4. TRAFFIC SIGNAL LOOP DETECTOR PAVEMENT MARKINGS ARE SHOWN ON SHEET TS1.
 5. ALL POST-MOUNTED SIGN INSTALLATION SHALL BE PER COB STANDARD DWG TE-21 UNLESS OTHERWISE NOTED.
 6. ALL POST-MOUNTED STREET NAME SIGNS SHALL CONFORM TO COB STANDARD DWGS TE-22A, TE-22B, TE-23A, TE-23B, AND TE-24.
 7. SEE SHEETS CSB-CS9 FOR SIGN SCHEDULES AND DETAILS

- CONSTRUCTION NOTES:**
- 1 DOUBLE CENTER LINE PER COB STANDARD DWG TE-4A.
 - 2 4" WHITE INLAID REFLECTORIZED THERMOPLASTIC EDGE LINE.
 - 3 12" PLASTIC CROSSWALK LINE PER COB STANDARD DWG TE-7.
 - 4 NOT USED THIS SHEET.
 - 5 12" PLASTIC STOP LINE.
 - 6 NOT USED THIS SHEET.
 - 7 PLASTIC CROSSWALK LINE PER COB STANDARD DWG TE-7.
 - 8 TWO-WAY LEFT TURN LINE PER COB STANDARD DWG TE-4A.
 - 9 EXISTING SIGN TO REMAIN.
 - 10 YELLOW PAINTED CURB.
 - 11 NOT USED THIS SHEET.
 - 12 NOT USED THIS SHEET.
 - 13 NOT USED THIS SHEET.
 - 14 NOT USED THIS SHEET.
 - 15 NOT USED THIS SHEET.
 - 16 NOT USED THIS SHEET.
 - 17 NO BUFFER CONDITION EDGE STRIPING PER DETAIL ON SHEET CS9.
 - 18 NOT USED THIS SHEET.
 - 19 FLEXIBLE GUIDE POST TYPE W PER WSDOT STANDARD PLAN M-40.10-02.



**CALL 48 HOURS BEFORE YOU DIG
1-800-424-5555**



06/06/2012 2:33pm I:\25\2008\010 WLSP Bellevue\Design\3810-CS1.dwg

NO.	DATE	BY	APPR.	REVISIONS

Approved By

TRANSPORTATION DESIGN MANAGER	DATE
PROJECT MANAGER	DATE

City of Bellevue
TRANSPORTATION DEPARTMENT

ReidMiddleton
728 13th Street SE Suite 200
Everett, Washington 98204
Ph 425 741-3000

WEST LAKE SAMMAMISH PARKWAY IMPROVEMENTS PROJECT - PHASE 1

CHANNELIZATION AND SIGNING PLAN

CS4 **SHT 76 OF 108**

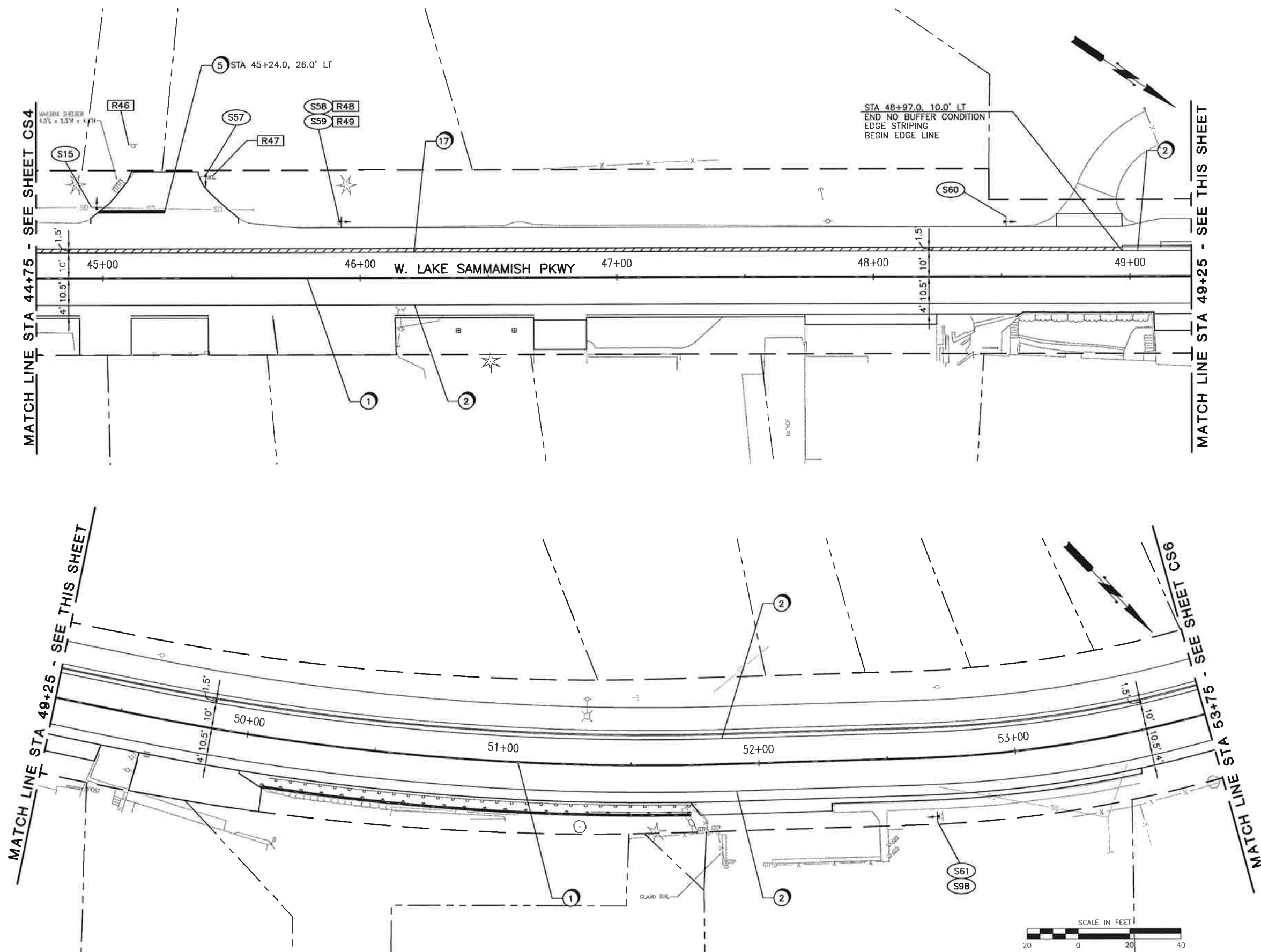
SEC. 12, T.24N., R.5E., W.M.

SIGN GENERAL NOTES:

1. ALL CONFLICTING CHANNELIZATION SHALL BE REMOVED.
2. CHANNELIZATION DESIGN, PAVEMENT MARKINGS, AND ALL SIGNAGE SHALL BE PER THE COB DESIGN MANUAL (APRIL 11, 2011), CURRENT WSDOT STANDARD PLANS, AND THE 2009 MANUAL ON UNIFORM TRAFFIC CONTROL DEVICES.
3. ALL RAISED PAVEMENT MARKERS SHALL CONFORM TO COB STANDARD DWG TE-5.
4. TRAFFIC SIGNAL LOOP DETECTOR PAVEMENT MARKINGS ARE SHOWN ON SHEET TS1.
5. ALL POST-MOUNTED SIGN INSTALLATION SHALL BE PER COB STANDARD DWG TE-21 UNLESS OTHERWISE NOTED.
6. ALL POST-MOUNTED STREET NAME SIGNS SHALL CONFORM TO COB STANDARD DWGS TE-22A, TE-22B, TE-23A, TE-23B, AND TE-24.
7. SEE SHEETS CS8-C9 FOR SIGN SCHEDULES AND DETAILS

CONSTRUCTION NOTES:

- 1 DOUBLE CENTER LINE PER COB STANDARD DWG TE-4A.
- 2 4" WHITE INLAID REFLECTORIZED THERMOPLASTIC EDGE LINE.
- 3 NOT USED THIS SHEET.
- 4 NOT USED THIS SHEET.
- 5 12" PLASTIC STOP LINE.
- 6 NOT USED THIS SHEET.
- 7 NOT USED THIS SHEET.
- 8 NOT USED THIS SHEET.
- 9 NOT USED THIS SHEET.
- 10 NOT USED THIS SHEET.
- 11 NOT USED THIS SHEET.
- 12 NOT USED THIS SHEET.
- 13 NOT USED THIS SHEET.
- 14 NOT USED THIS SHEET.
- 15 NOT USED THIS SHEET.
- 16 NOT USED THIS SHEET.
- 17 NO BUFFER CONDITION EDGE STRIPING PER DETAIL ON SHEET CS9.
- 18 NOT USED THIS SHEET.



**CALL 48 HOURS BEFORE YOU DIG
1-800-424-5555**

06/08/2012 2:33pm L:\25\2008\010 WLSP Bellevue\Design\3810-CS1.dwg

NO.	DATE	BY	APPR.	REVISIONS

Approved By

TRANSPORTATION DESIGN MANAGER DATE

PROJECT MANAGER DATE

DESIGNED BY DATE
 DRAWN BY DATE
 CHECKED BY DATE



ReidMiddleton

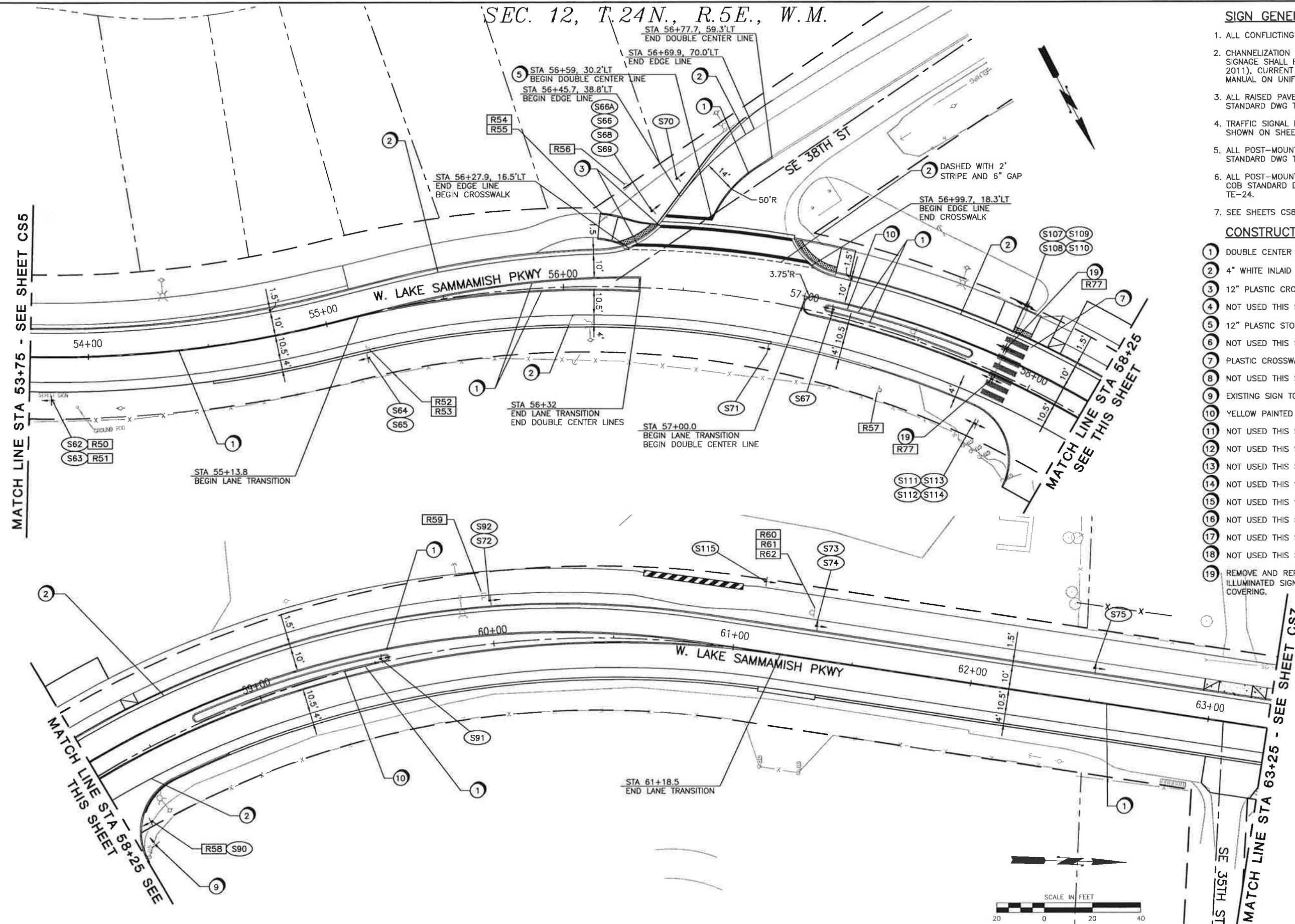
720 134th Street SE Suite 200
 Everett, Washington 98204
 Ph: 425 741-3800

**WEST LAKE SAMMAMISH PARKWAY
 IMPROVEMENTS PROJECT - PHASE 1**

CHANNELIZATION AND SIGNING PLAN

CS5 SHT 77 OF 108

SEC. 12, T.24N., R.5E., W.M.



- SIGN GENERAL NOTES:**
1. ALL CONFLICTING CHANNELIZATION SHALL BE REMOVED.
 2. CHANNELIZATION DESIGN, PAVEMENT MARKINGS, AND ALL SIGNAGE SHALL BE PER THE COB DESIGN MANUAL (APRIL 11, 2011), CURRENT WSDOT STANDARD PLANS, AND THE 2009 MANUAL ON UNIFORM TRAFFIC CONTROL DEVICES.
 3. ALL RAISED PAVEMENT MARKERS SHALL CONFORM TO COB STANDARD DWG TE-5.
 4. TRAFFIC SIGNAL LOOP DETECTOR PAVEMENT MARKINGS ARE SHOWN ON SHEET TS1.
 5. ALL POST-MOUNTED SIGN INSTALLATION SHALL BE PER COB STANDARD DWG TE-21 UNLESS OTHERWISE NOTED.
 6. ALL POST-MOUNTED STREET NAME SIGNS SHALL CONFORM TO COB STANDARD DWGS TE-22A, TE-22B, TE-23A, TE-23B, AND TE-24.
 7. SEE SHEETS CS8-CS9 FOR SIGN SCHEDULES AND DETAILS

- CONSTRUCTION NOTES:**
- 1 DOUBLE CENTER LINE PER COB STANDARD DWG TE-4A.
 - 2 4" WHITE INLAID REFLECTORIZED THERMOPLASTIC EDGE LINE.
 - 3 12" PLASTIC CROSSWALK LINE PER COB STANDARD DWG TE-7.
 - 4 NOT USED THIS SHEET.
 - 5 12" PLASTIC STOP LINE.
 - 6 NOT USED THIS SHEET.
 - 7 PLASTIC CROSSWALK LINE PER COB STANDARD DWG TE-7.
 - 8 NOT USED THIS SHEET.
 - 9 EXISTING SIGN TO REMAIN.
 - 10 YELLOW PAINTED CURB.
 - 11 NOT USED THIS SHEET.
 - 12 NOT USED THIS SHEET.
 - 13 NOT USED THIS SHEET.
 - 14 NOT USED THIS SHEET.
 - 15 NOT USED THIS SHEET.
 - 16 NOT USED THIS SHEET.
 - 17 NOT USED THIS SHEET.
 - 18 NOT USED THIS SHEET.
 - 19 REMOVE AND REPLACE PLASTIC COVERING FOR OVERHEAD ILLUMINATED SIGNS - (4) EACH. USE STANDARD YELLOW COVERING.



**CALL 48 HOURS BEFORE YOU DIG
1-800-424-5555**

08/06/2012 2:33pm I:\25\2008\010 W.LSP Bellevue\Design\3810-CS1.dwg

NO.	DATE	BY	APPR.	REVISIONS

Approved By

TRANSPORTATION DESIGN MANAGER DATE

PROJECT MANAGER DATE

XTV DESIGNED BY JUNE 2012 DATE

TAC DRAWN BY JUNE 2012 DATE

MJV CHECKED BY JUNE 2012 DATE



Reid Middleton

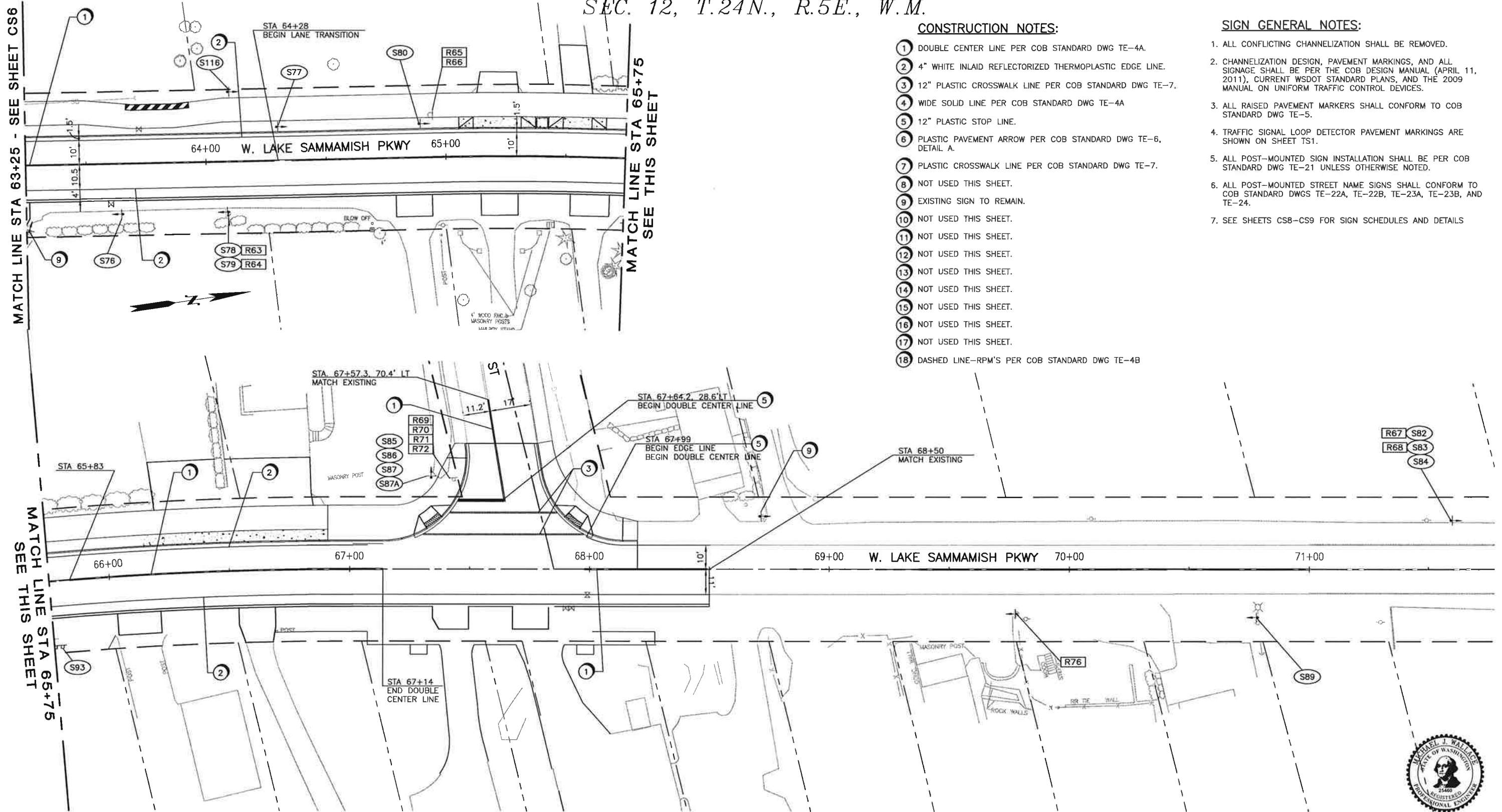
728 134th Street SE Suite 200
Everett, Washington 98204
Ph: 425-741-3800

WEST LAKE SAMMAMISH PARKWAY IMPROVEMENTS PROJECT - PHASE 1

CHANNELIZATION AND SIGNING PLAN

CS6 SHT 78 OF 108

SEC. 12, T.24N., R.5E., W.M.



CONSTRUCTION NOTES:

- ① DOUBLE CENTER LINE PER COB STANDARD DWG TE-4A.
- ② 4" WHITE INLAID REFLECTORIZED THERMOPLASTIC EDGE LINE.
- ③ 12" PLASTIC CROSSWALK LINE PER COB STANDARD DWG TE-7.
- ④ WIDE SOLID LINE PER COB STANDARD DWG TE-4A
- ⑤ 12" PLASTIC STOP LINE.
- ⑥ PLASTIC PAVEMENT ARROW PER COB STANDARD DWG TE-6, DETAIL A.
- ⑦ PLASTIC CROSSWALK LINE PER COB STANDARD DWG TE-7.
- ⑧ NOT USED THIS SHEET.
- ⑨ EXISTING SIGN TO REMAIN.
- ⑩ NOT USED THIS SHEET.
- ⑪ NOT USED THIS SHEET.
- ⑫ NOT USED THIS SHEET.
- ⑬ NOT USED THIS SHEET.
- ⑭ NOT USED THIS SHEET.
- ⑮ NOT USED THIS SHEET.
- ⑯ NOT USED THIS SHEET.
- ⑰ NOT USED THIS SHEET.
- ⑱ DASHED LINE-RPM'S PER COB STANDARD DWG TE-4B

SIGN GENERAL NOTES:

- 1. ALL CONFLICTING CHANNELIZATION SHALL BE REMOVED.
- 2. CHANNELIZATION DESIGN, PAVEMENT MARKINGS, AND ALL SIGNAGE SHALL BE PER THE COB DESIGN MANUAL (APRIL 11, 2011), CURRENT WSDOT STANDARD PLANS, AND THE 2009 MANUAL ON UNIFORM TRAFFIC CONTROL DEVICES.
- 3. ALL RAISED PAVEMENT MARKERS SHALL CONFORM TO COB STANDARD DWG TE-5.
- 4. TRAFFIC SIGNAL LOOP DETECTOR PAVEMENT MARKINGS ARE SHOWN ON SHEET TS1.
- 5. ALL POST-MOUNTED SIGN INSTALLATION SHALL BE PER COB STANDARD DWG TE-21 UNLESS OTHERWISE NOTED.
- 6. ALL POST-MOUNTED STREET NAME SIGNS SHALL CONFORM TO COB STANDARD DWGS TE-22A, TE-22B, TE-23A, TE-23B, AND TE-24.
- 7. SEE SHEETS CS8-CS9 FOR SIGN SCHEDULES AND DETAILS



**CALL 48 HOURS BEFORE YOU DIG
1-800-424-5555**

06/06/2012 2:33pm I:\25\2008\010 WLSP Bellevue\Design\3810-CS1.dwg

NO.	DATE	BY	APPR.	REVISIONS

Approved By	
TRANSPORTATION DESIGN MANAGER	DATE
PROJECT MANAGER	DATE

DESIGNED BY	JUNE 2012	DATE
DRAWN BY	JUNE 2012	DATE
CHECKED BY	JUNE 2012	DATE

City of Bellevue
TRANSPORTATION DEPARTMENT

Reid Middleton
728 13th Street SE Suite 200
Everett, Washington 98204
Ph: 425 741-3000

WEST LAKE SAMMAMISH PARKWAY IMPROVEMENTS PROJECT - PHASE 1

CHANNELIZATION AND SIGNING PLAN

CS7 SHT 79 OF 108

SIGN SCHEDULE

SIGN NO.	STATION	OFFSET	DESIGNATION	SIGN SIZE	COLOR	EXISTING POST	NEW POST	EXISTING SIGN	NEW SIGN	REMARKS
S1	9+83	56' RT	R1-2 (YIELD)	30" x 30" x 30"	RED ON WHITE		X		X	
S2	10+38	53' RT	R3-5R (RIGHT TURN ONLY)	30" x 36"	BLACK ON WHITE		X		X	
S3	10+48	50' RT	S1-1 (SCHOOL ADVANCE SIGN)	36" x 36"	BLACK ON YELLOW		X		X	MOUNT ABOVE S4
S4	10+48	50' RT	W16-9P (AHEAD)	24" x 12"	BLACK ON YELLOW				X	MOUNT BELOW S3
S5	10+61	53' LT	R5-1 (DO NOT ENTER)	24" x 24"	RED ON WHITE		X		X	MOUNT OPPOSITE OF S6
S6	10+61	53' LT	R3-5R (RIGHT TURN ONLY)	30" x 36"	BLACK ON WHITE				X	MOUNT OPPOSITE OF S5
S7	10+92	8' RT	R4-7 (KEEP RIGHT)	18" x 24"	BLACK ON WHITE		X		X	PROVIDE 5 FEET VERTICAL CLEARANCE FROM FINISHED GRADE OF MEDIAN TO BOTTOM OF SIGN
S8	11+08	42' LT	R5-1 (DO NOT ENTER)	24" x 24"	RED ON WHITE		X		X	
S9	11+09	50' LT	R8-3 MOD (NO PARKING FIRE LANE)	12" x 18"	RED ON WHITE		X		X	
S10	13+43	28' RT	S1-1 (SCHOOL ADVANCE SIGN)	36" x 36"	BLACK ON YELLOW	X			X	MOUNT ABOVE S11
S11	13+43	28' RT	W16-7PL (DIAGONAL ARROW)	24" x 12"	BLACK ON YELLOW				X	MOUNT BELOW S10
S12	12+00	22' LT	D-1 SPECIAL (DESTINATION SIGN)	- x -	WHITE ON GREEN	X		X		RELOCATE EXISTING POSTS
S13	12+76	40' RT	D3-102 (PRIVATE DRIVEWAY)	6" x -	WHITE ON GREEN		X	X		
S14	26+82	30' LT	R1-1 (STOP)	36" x 36"	WHITE ON RED		X		X	
S15	44+98	27' LT	R1-1 (STOP)	36" x 36"	WHITE ON RED		X		X	
S16	12+96	32' RT	R10-6 (STOP HERE ON RED)	24" x 30"	BLACK ON WHITE	X			X	
S17	13+10	36' RT	R5-1 (DO NOT ENTER)	24" x 24"	RED ON WHITE		X		X	MOUNT BELOW S18
S18	13+10	36' RT	R7-101 MOD (STAFF AND BUSES ONLY)	12" x 18"	RED ON WHITE				X	MOUNT ABOVE S17
S19	13+14	49' LT	R7-301 MOD (NO PARKING FIRE LANE)	12" x 18"	RED ON WHITE		X		X	
S20	13+54	46' LT	R5-1 (DO NOT ENTER)	24" x 24"	RED ON WHITE				X	MOUNT ON EXISTING UTILITY POLE
S21	13+72	25' LT	S1-1 (SCHOOL ADVANCE SIGN)	36" x 36"	BLACK ON YELLOW	X			X	RELOCATE EXISTING POST, MOUNT ABOVE S22
S22	13+72	25' LT	W16-7PL (DIAGONAL ARROW)	24" x 12"	BLACK ON YELLOW				X	MOUNT BELOW S21
S23	14+68	34' RT	R1-1 (STOP)	36" x 36"	WHITE ON RED		X	X		MOUNT BELOW S24
S24	14+68	34' RT	COB TYPE 2 MOD (W LK SAMM PKWY SE)	9" x -	WHITE ON GREEN			X	X	DOUBLE SIDED SIGN, MOUNT ABOVE S23
S25	14+68	34' RT	COB TYPE 1 (181 AVE SE)	9" x 30"	WHITE ON GREEN			X	X	DOUBLE SIDED SIGN, MOUNT ABOVE S24
S26	14+68	34' RT	W14-2P (NO OUTLET)	6" x 18"	BLACK ON YELLOW			X	X	DOUBLE SIDED SIGN, MOUNT ABOVE S25
S27	14+85	28' LT	R10-7 MOD (DO NOT BLOCK DRIVEWAY)	24" x 30"	BLACK ON WHITE	X		X		RELOCATE EXISTING POST, MOUNT ABOVE S28
S28	14+85	28' LT	R10-6 (STOP HERE ON RED)	24" x 30"	BLACK ON WHITE			X	X	MOUNT BELOW S27
S29	19+50	15' LT	W11-8 (FIRE STATION)	36" x 36"	BLACK ON YELLOW	X		X		RELOCATE EXISTING POST
S30	19+81	43' LT	R3-2 (NO LEFT TURN)	24" x 24"	RED AND BLACK ON WHITE		X		X	
S31	17+00	39' LT	S5-1 (SCHOOL SPEED LIMIT 20 WHEN FLASHING)	24" x 48"	TOP: BLACK ON YELLOW, BOTTOM: BLACK ON WHITE			X		REPOSITION SIGN ON MAST ARM OVER LANE
S32	16+51	20' RT	R2-1 (SPEED LIMIT 30)	24" x 30"	BLACK ON WHITE	X			X	MOUNT ABOVE S33
S33	16+51	20' RT	S5-2 (END SCHOOL ZONE)	24" x 30"	BLACK ON WHITE				X	MOUNT BELOW S32
S34	17+25	39' LT	W3-3 (SIGNAL AHEAD)	36" x 36"	BLACK, GREEN AND RED ON YELLOW				X	MOUNT ON FLASHING BEACON STANDARD
S35	18+72	16' LT	S1-1 (SCHOOL ADVANCE SIGN)	36" x 36"	BLACK ON YELLOW	X			X	RELOCATE EXISTING POST, MOUNT ABOVE S36
S36	18+72	16' LT	W16-9P (AHEAD)	12" x 24"	BLACK ON YELLOW				X	MOUNT BELOW S35
S37	23+97	27' LT	R5-2 (NO TRUCKS)	30" x 30"	RED AND BLACK ON WHITE		X		X	
S38	22+16	20' RT	COB TYPE 1 (178 LN SE)	6" x 30"	WHITE ON GREEN		X		X	DOUBLE SIDED SIGN, MOUNT ABOVE S39
S39	22+16	20' RT	COB TYPE 1 (PRIVATE ROAD)	6" x 30"	WHITE ON GREEN				X	DOUBLE SIDED SIGN, MOUNT BELOW S38
S40	27+16	19' RT	R1-1 (STOP)	36" x 36"	WHITE ON RED		X		X	MOUNT BELOW S41
S41	27+16	19' RT	COB TYPE 1 (PRIVATE ROAD)	6" x 30"	WHITE ON GREEN				X	DOUBLE SIDED SIGN, MOUNT ABOVE S40
S42	27+16	19' RT	COB TYPE 1 MOD (SE 40 PL)	6" x 30"	WHITE ON GREEN				X	DOUBLE SIDED SIGN, MOUNT ABOVE S41
S43	27+16	19' RT	COB TYPE 1 (177 AVE SE)	6" x 30"	WHITE ON GREEN				X	DOUBLE SIDED SIGN, MOUNT ABOVE S41
S44	27+16	19' RT	COB TYPE 2 MOD (W LK SAMM PKWY SE)	9" x -	WHITE ON GREEN				X	DOUBLE SIDED SIGN, MOUNT ABOVE S42
S45	29+69	19' RT	COB TYPE 1 (PRIVATE ROAD)	6" x 30"	WHITE ON GREEN		X		X	DOUBLE SIDED SIGN, MOUNT BELOW S46
S46	29+69	19' RT	COB TYPE 1 MOD (SE 40 PL)	6" x 30"	WHITE ON GREEN				X	DOUBLE SIDED SIGN, MOUNT ABOVE S45
S47	29+69	19' RT	COB TYPE 1 (176 AVE SE)	6" x 30"	WHITE ON GREEN				X	DOUBLE SIDED SIGN, MOUNT ABOVE S46
S48										NOT USED
S49										NOT USED
S50	36+15	25' LT	METRO BUS STOP ROUTE 890	- x -	BROWN, RED, YELLOW ON WHITE	X		X		RELOCATE EXISTING POST
S51	36+74	33' LT	R1-1 (STOP)	36" x 36"	WHITE ON RED	X			X	
S51A	36+74	33' LT	SPECIAL PATHWAY	30" x 30"	BLACK ON WHITE	X			X	MOUNT S51A BELOW S51
S52	38+75	28' RT	METRO BUS STOP ROUTE 890	- x -	BROWN, RED, YELLOW ON WHITE	X		X		RELOCATE EXISTING POST
S53	38+36		R4-7C (KEEP RIGHT)	18" x 30"	BLACK ON WHITE		X		X	MOUNT IN CENTER OF MEDIAN
S54	38+52		R4-7C (KEEP RIGHT)	18" x 30"	BLACK ON WHITE		X		X	MOUNT IN CENTER OF MEDIAN
S55	41+61	18' RT	R2-1 (SPEED LIMIT 30)	24" x 30"	BLACK ON WHITE		X		X	
S56	43+75	24' LT	R7-402 MOD (NO PARKING, STOPPING, STANDING)	12" x 18"	RED ON WHITE		X		X	
S57	45+40	40' LT	W14-1 MOD (DEAD END PRIVATE ROAD)	30" x 30"	BLACK ON YELLOW		X		X	
S58	45+92	22' LT	R2-1 (SPEED LIMIT 30)	24" x 30"	BLACK ON WHITE	X			X	MOUNT ABOVE S59
S59	45+92	22' LT	R7-402 MOD (NO PARKING, STOPPING, STANDING)	12" x 18"	RED ON WHITE				X	MOUNT BELOW S58
S60	48+50	22' LT	R7-402 MOD (NO PARKING, STOPPING, STANDING)	12" x 18"	RED ON WHITE		X		X	
S61	52+69	23' RT	R2-1 (SPEED LIMIT 30)	24" x 30"	BLACK ON WHITE	X			X	MOUNT ON EXISTING POLE ABOVE EXISTING ELECTRONIC SPEED SIGN
S62	53+35	18' RT	W2-2L (SIDE ROAD SYMBOL)	36" x 36"	BLACK ON YELLOW		X		X	MOUNT BELOW S63
S63	53+35	18' RT	D3-201 (SE 38 ST)	6" x 30"	BLACK ON YELLOW				X	MOUNT ABOVE S62
S64	55+14	18' RT	W11-2 (ADVANCE PEDESTRIAN WARNING)	36" x 36"	BLACK ON YELLOW		X		X	MOUNT ABOVE S65
S65	55+14	18' RT	W16-9P (AHEAD)	24" x 12"	BLACK ON YELLOW				X	MOUNT BELOW S64
S66	56+36	32' LT	R1-1 (STOP)	36" x 36"	WHITE ON RED		X		X	
S66A	56+36	32' LT	SPECIAL PATHWAY	30" x 30"	BLACK ON WHITE		X		X	MOUNT S66A BELOW S66
S67	57+11	2.5' LT	R4-7 (KEEP RIGHT)	18" x 24"	BLACK ON WHITE	X		X		RELOCATE EXISTING POST. PROVIDE 5 FEET VERTICAL CLEARANCE FROM FINISHED GRADE OF MEDIAN TO BOTTOM OF SIGN
S68	56+36	32' LT	COB TYPE 2 MOD (W LK SAMM PKWY SE)	9" x -	WHITE ON GREEN			X	X	DOUBLE SIDED SIGN, MOUNT ABOVE S66
S69	56+36	32' LT	COB TYPE 1 (SE 38 ST)	9" x 30"	WHITE ON GREEN			X	X	DOUBLE SIDED SIGN, MOUNT ABOVE S68
S70	56+45	46' LT	METRO BUS STOP ROUTE 890	30" x 15"	BROWN, RED, YELLOW ON WHITE		X		X	
S71	56+90	26' RT	R7-402 MOD (NO PARKING, STOPPING, STANDING)	12" x 18"	RED ON WHITE		X		X	
S72	60+00	18' LT	W11-2 (ADVANCE PEDESTRIAN CROSSING)	36" x 36"	BLACK ON YELLOW		X		X	MOUNT ABOVE S92
S73	61+33	14' LT	W2-2R (SIDE ROAD SYMBOL)	36" x 36"	BLACK ON YELLOW	X			X	RELOCATE EXISTING POST, MOUNT BELOW S74
S74	61+33	14' LT	D3-201 (SE 38 ST)	9" x 30"	BLACK ON YELLOW				X	MOUNT ABOVE S73
S75										NOT USED
S76	63+65	21' RT	VASA CREEK HELP US PROTECT YOUR STREAM	30" x 24"	WHITE ON BLUE		X	X		
S77	64+30	14' LT	VASA CREEK HELP US PROTECT YOUR STREAM	30" x 24"	WHITE ON BLUE		X	X		
S78	64+09	21' RT	W2-2L (SIDE ROAD SYMBOL)	36" x 36"	BLACK ON YELLOW	X			X	RELOCATE EXISTING POST, MOUNT BELOW S79
S79	64+09	21' RT	D3-201 (SE 34 ST)	6" x 30"	BLACK ON YELLOW				X	MOUNT ABOVE S78
S80	64+89	14' LT	R2-1 (SPEED LIMIT 30)	24" x 30"	BLACK ON WHITE		X		X	

SIGN SCHEDULE GENERAL NOTES:

- ALL SIGNS SHALL BE PER WSDOT SIGN FABRICATION MANUAL UNLESS OTHERWISE NOTED.
- ALL SIGNS SHALL HAVE 7 FEET VERTICAL CLEARANCE FROM FINISHED GRADE TO BOTTOM OF SIGN UNLESS OTHERWISE NOTED.
- ALL POST-MOUNTED SIGN INSTALLATION SHALL BE PER COB STANDARD DWG TE-21 UNLESS OTHERWISE NOTED.
- ALL POST-MOUNTED STREET NAME SIGNS SHALL CONFORM TO COB STANDARD DWGS TE-22A, TE-22B, TE-23A, TE-23B, AND TE-24.
- SEE SHEET CS10 FOR SIGN DETAILS.
- ALL CROSSWALK SIGNS ARE STANDARD YELLOW, UNLESS NOTED OTHERWISE.

06/06/2012 2:33pm I:\25\2008\010 WLSP Bellevue\Design\3810-C51.dwg

NO.	DATE	BY	APPR.	REVISIONS

Approved By

TRANSPORTATION DESIGN MANAGER DATE

PROJECT MANAGER DATE

RTY DESIGNED BY JUNE 2012 DATE

FAC DRAWN BY JUNE 2012 DATE

MJY CHECKED BY JUNE 2012 DATE



ReidMiddleton

728 134th Street SE Suite 200
Everett, Washington 98204
Ph: 425 741-3000

WEST LAKE SAMMAMISH PARKWAY IMPROVEMENTS PROJECT - PHASE 1

CHANNELIZATION AND SIGNING SCHEDULE

CS8 **SHT 80 OF 108**



CALL 48 HOURS BEFORE YOU DIG 1-800-424-5555

SIGN SCHEDULE (CONTINUED)

SXX SIGN NO.	STATION	OFFSET	DESIGNATION	SIGN SIZE	COLOR	EXISTING POST	NEW POST	EXISTING SIGN	NEW SIGN	REMARKS
S81	NOT USED									
S82	71+60	20' LT	W2-2R (SIDE ROAD SYMBOL)	36" x 36"	BLACK ON YELLOW				X	MOUNT ABOVE S83
S83	71+60	20' LT	D3-201 (SE 34 ST)	6" x 30"	BLACK ON YELLOW				X	MOUNT BELOW S82
S84	71+60	20' LT	R7-101 (NO PARKING ANY TIME)	12" x 18"	RED ON WHITE			X		MOUNT BELOW S83
S85	67+34	38' LT	COB TYPE 2 MOD (W LK SAMM PKWY SE)	9" x -	WHITE ON GREEN				X	DOUBLE SIDED SIGN, MOUNT ABOVE S87
S86	67+34	38' LT	COB TYPE 1 (SE 34 ST)	6" x 30"	WHITE ON GREEN				X	DOUBLE SIDED SIGN, MOUNT ABOVE S85
S87	67+34	38' LT	R1-1 (STOP)	36" x 36"	WHITE ON RED		X		X	MOUNT BELOW S85
S87A	67+34	38' LT	SPECIAL PATHWAY	30" x 30"	BLACK ON WHITE		X		X	MOUNT S87A BELOW S87
S88	20+55	31' RT	PRIVATE SIGN	- x -		X		X		PROTECT AND RESET PRIVATE SIGN
S89	70+78	20' RT	R2-1 (SPEED LIMIT 30)	24" x 30"	BLACK ON WHITE	X			X	
S90	58+44	27' RT	R7-402 MOD (NO PARKING STANDING STOPPING)	12" x 18"	BLACK ON WHITE				X	MOUNT ON EXISTING UTILITY POLE
S91	59+54	1.5' LT	R4-7 (KEEP RIGHT)	18" x 24"	BLACK ON WHITE	X		X		RELOCATE EXISTING POST. PROVIDE 5 FEET VERTICAL CLEARANCE FROM FINISHED GRADE OF MEDIAN TO BOTTOM OF SIGN
S92	60+00	18' LT	W16-9P (AHEAD)	24" x 12"	BLACK ON YELLOW		X		X	MOUNT BELOW S72
S93	65+77	27' RT	PRIVATE SIGN	- x -		X		X		PROTECT AND RESET PRIVATE SIGN
S94	36+00	20' RT	W11-2 (ADVANCE PEDESTRIAN CROSSING)	36" x 36"	BLACK ON YELLOW		X		X	MOUNT ABOVE S95
S95	36+00	20' RT	W16-9P (AHEAD)	24" x 12"	BLACK ON YELLOW				X	MOUNT BELOW S94
S96	40+50	14' LT	W11-2 (ADVANCE PEDESTRIAN CROSSING)	36" x 36"	BLACK ON YELLOW		X		X	MOUNT ABOVE S97
S97	40+50	14' LT	W16-9P (AHEAD)	24" x 12"	BLACK ON YELLOW				X	MOUNT BELOW S96
S98	52+69	23' RT	ELECTRONIC SPEED SIGN	- x -		X		X		PROTECT SIGN
S99	38+39	24' LT	W11-2 (PEDESTRIAN CROSSING)	36" x 36"	BLACK ON YELLOW		X		X	MOUNT ABOVE S100, OPPOSITE OF S101, SEE DETAIL 2 ON SHEET PS1
S100	38+39	24' LT	W16-7PL (DIAGONAL ARROW) RIGHT	24" x 12"	BLACK ON YELLOW				X	MOUNT BELOW S99, OPPOSITE OF S102, SEE DETAIL 2 ON SHEET PS1
S101	38+39	24' LT	W11-2 (PEDESTRIAN CROSSING)	36" x 36"	BLACK ON YELLOW				X	MOUNT ABOVE S102, OPPOSITE OF S99, SEE DETAIL 2 ON SHEET PS1
S102	38+39	24' LT	W16-7PL (DIAGONAL ARROW) LEFT	24" x 12"	BLACK ON YELLOW				X	MOUNT BELOW S101, OPPOSITE OF S100, SEE DETAIL 2 ON SHEET PS1
S103	38+39	26' RT	W11-2 (PEDESTRIAN CROSSING)	36" x 36"	BLACK ON YELLOW		X		X	MOUNT ABOVE S104, OPPOSITE OF S105, SEE DETAIL 2 ON SHEET PS1
S104	38+39	26' RT	W16-7PL (DIAGONAL ARROW) LEFT	24" x 12"	BLACK ON YELLOW				X	MOUNT BELOW S103, OPPOSITE OF S106, SEE DETAIL 2 ON SHEET PS1
S105	38+39	26' RT	W11-2 (PEDESTRIAN CROSSING)	36" x 36"	BLACK ON YELLOW				X	MOUNT ABOVE S106, OPPOSITE OF S103, SEE DETAIL 2 ON SHEET PS1
S106	38+39	26' RT	W16-7PL (DIAGONAL ARROW) RIGHT	24" x 12"	BLACK ON YELLOW				X	MOUNT BELOW S105, OPPOSITE OF S104, SEE DETAIL 2 ON SHEET PS1
S107	57+89	30' LT	W11-2 (PEDESTRIAN CROSSING)	36" x 36"	BLACK ON YELLOW		X		X	MOUNT ABOVE S108, OPPOSITE OF S109, SEE DETAIL 2 ON SHEET PS1
S108	57+89	30' LT	W16-7PL (DIAGONAL ARROW) RIGHT	24" x 12"	BLACK ON YELLOW				X	MOUNT BELOW S107, OPPOSITE OF S110, SEE DETAIL 2 ON SHEET PS1
S109	57+89	30' LT	W11-2 (PEDESTRIAN CROSSING)	36" x 36"	BLACK ON YELLOW				X	MOUNT ABOVE S110, OPPOSITE OF S107, SEE DETAIL 2 ON SHEET PS1
S110	57+89	30' LT	W16-7PL (DIAGONAL ARROW) LEFT	24" x 12"	BLACK ON YELLOW				X	MOUNT BELOW S109, OPPOSITE OF S108, SEE DETAIL 2 ON SHEET PS1
S111	57+86	23' RT	W11-2 (PEDESTRIAN CROSSING)	36" x 36"	BLACK ON YELLOW		X		X	MOUNT ABOVE S112, OPPOSITE OF S113, SEE DETAIL 2 ON SHEET PS1
S112	57+86	23' RT	W16-7PL (DIAGONAL ARROW) LEFT	24" x 12"	BLACK ON YELLOW				X	MOUNT BELOW S111, OPPOSITE OF S114, SEE DETAIL 2 ON SHEET PS1
S113	57+86	23' RT	W11-2 (PEDESTRIAN CROSSING)	36" x 36"	BLACK ON YELLOW				X	MOUNT ABOVE S114, OPPOSITE OF S111, SEE DETAIL 2 ON SHEET PS1
S114	57+86	23' RT	W16-7PL (DIAGONAL ARROW) RIGHT	24" x 12"	BLACK ON YELLOW				X	MOUNT BELOW S113, OPPOSITE OF S112, SEE DETAIL 2 ON SHEET PS1
S115	61+10	29' LT	OM-3L (OBJECT MARKER) TYPE 3	12" x 36"	BLACK ON YELLOW		X		X	
S116	64+10	29' LT	OM-3L (OBJECT MARKER) TYPE 3	12" x 36"	BLACK ON YELLOW		X		X	
S117-S120	57+85	--	W11-2 (PEDESTRIAN CROSSING)	12" x 16"	BLACK ON YELLOW				X	ILLUMINATED SIGNS, 4 EACH

SIGN SCHEDULE GENERAL NOTES:

- ALL SIGNS SHALL BE PER WSDOT SIGN FABRICATION MANUAL UNLESS OTHERWISE NOTED.
- ALL SIGNS SHALL HAVE 7 FEET VERTICAL CLEARANCE FROM FINISHED GRADE TO BOTTOM OF SIGN UNLESS OTHERWISE NOTED.
- ALL POST-MOUNTED SIGN INSTALLATION SHALL BE PER COB STANDARD DWG TE-21 UNLESS OTHERWISE NOTED.
- ALL POST-MOUNTED STREET NAME SIGNS SHALL CONFORM TO COB STANDARD DWGS TE-22A, TE-22B, TE-23A, TE-23B, AND TE-24.
- SEE SHEET CS10 FOR SIGN DETAILS.
- ALL CROSSWALK SIGNS ARE STANDARD YELLOW, UNLESS NOTED OTHERWISE.

SIGN REMOVAL SCHEDULE

RXX SIGN NO.	STATION	OFFSET	DESIGNATION	REMARKS
R1	9+83	56' RT	R1-2 (YIELD)	
R2	10+38	53' RT	R3-5R (RIGHT TURN ONLY)	
R3	10+48	50' RT	S1-1 (SCHOOL ADVANCE SIGN)	
R4	10+48	50' RT	W16-9P (AHEAD)	
R5	10+92	8' RT	R4-7 (KEEP RIGHT)	
R6	10+92	8' RT	(KEEP RIGHT)	
R7	10+61	53' LT	R5-1 (DO NOT ENTER)	
R8	10+61	53' LT	R3-5R (RIGHT TURN ONLY)	
R9	11+08	42' LT	R5-1 (DO NOT ENTER)	
R10	11+09	50' LT	R8-3 MOD (NO PARKING FIRE LANE)	
R11	12+93	37' LT	R7-101 MOD (NO PARKING SOUTH OF HERE)	
R12	12+93	37' LT	R7-201 (TOW AWAY ZONE)	
R13	13+26	33' RT	R5-1 (DO NOT ENTER)	
R14	13+26	33' RT	R8-1 MOD (STAFF AND BUSES ONLY)	
R15	13+27	39' LT	R8-3 MOD (NO PARKING FIRE LANE)	
R16	13+52	44' LT	R5-1 (DO NOT ENTER)	
R17	13+66	32' LT	S1-1 (SCHOOL ADVANCE SIGN)	
R18	13+66	32' LT	W16-7PL (DIAGONAL ARROW)	
R19	14+96	40' LT	W2-6P (ROUNDAABOUT AHEAD)	SALVAGE SIGN
R20	16+39	39' LT	W14-3 (NO PASSING ZONE)	SALVAGE SIGN
R21	19+62	29' LT	R7-101 (NO PARKING ANY TIME)	
R22	20+66	23' LT	S1-1 (SCHOOL ADVANCE SIGN)	
R23	20+66	23' LT	R7-101 (NO PARKING ANY TIME)	
R24	22+16	26' RT	COB TYPE 1 (178 LN SE)	
R25	22+16	26' RT	COB TYPE 1 (PRIVATE ROAD)	
R26	23+75	23' LT	R7-101 (NO PARKING ANY TIME)	
R27	24+08	30' LT	R5-2 (NO TRUCKS)	
R28	27+16	19' RT	R1-1 (STOP)	
R29	27+16	19' RT	COB TYPE 1 (PRIVATE ROAD)	
R30	27+16	19' RT	COB TYPE 1 (177 AVE SE)	
R31	27+16	19' RT	COB TYPE 1 MOD (SE 40 PL)	
R32	27+16	19' RT	COB TYPE 2 MOD (W LK SAMM PKWY SE)	
R33	29+49	23' LT	COB TYPE 1 (PRIVATE ROAD)	
R34	29+49	23' LT	COB TYPE 1 MOD (SE 40 PL)	
R35	29+49	23' LT	COB TYPE 1 (176 AVE SE)	
R36	33+35	16' RT	W2-2L (SIDE ROAD SYMBOL)	
R37	33+35	16' RT	D3-201 (SE 40 PL)	
R38	34+53	21' LT	R7-101 (NO PARKING ANY TIME)	
R39	39+39	22' LT	W2-2R (SIDE ROAD SYMBOL)	
R40	39+39	22' LT	D3-201 (SE 40 PL)	
R41	39+39	22' LT	R7-101 (NO PARKING ANY TIME)	

SIGN REMOVAL SCHEDULE (CONTINUED)

RXX SIGN NO.	STATION	OFFSET	DESIGNATION	REMARKS
R42	40+45	31' LT	R7-101 (NO PARKING ANY TIME)	
R43	41+69	16' RT	R2-1 (SPEED LIMIT 30)	
R44	41+47	21' LT	R7-101 (NO PARKING ANY TIME)	
R45	44+42	25' LT	W12-401 MOD (LATERAL CLEARANCE MARKER)	
R46	45+12	52' LT	R1-1 (STOP)	
R47	45+42	39' LT	W14-1 MOD (DEAD END PRIVATE ROAD)	
R48	45+92	22' LT	R2-1 (SPEED LIMIT 30)	
R49	45+92	22' LT	R7-101 (NO PARKING ANY TIME)	
R50	53+35	18' RT	W2-2L (SIDE ROAD SYMBOL)	
R51	53+35	18' RT	D3-201 (SE 38 ST)	
R52	55+14	14' RT	W11-2 (ADVANCE PEDESTRIAN CROSSING)	
R53	55+14	14' RT	R7-101 (NO PARKING ANY TIME)	
R54	56+17	30' LT	R1-1 (STOP)	
R55	56+17	30' LT	(BIKES ON SHOULDER LOOK BOTH WAYS)	
R56	56+25	41' LT	METRO BUS STOP ROUTE 890	
R57	57+40	24' RT	R7-101 (NO PARKING ANY TIME)	
R58	58+44	27' RT	R7-101 (NO PARKING ANY TIME)	
R59	59+79	20' LT	W11-2 (ADVANCE PEDESTRIAN CROSSING)	
R60	61+31	19' LT	W2-2R (SIDE ROAD SYMBOL)	
R61	61+31	19' LT	D3-101 (SE 38 ST)	
R62	61+31	19' LT	R7-101 (NO PARKING ANY TIME)	
R63	64+08	22' RT	W2-2L (SIDE ROAD SYMBOL)	
R64	64+08	22' RT	D3-201 (SE 34 ST)	
R65	64+95	17' LT	R2-1 (SPEED LIMIT 30)	
R66	64+95	17' LT	R7-101 (NO PARKING ANY TIME)	
R67	71+60	25' LT	W2-2R (SIDE ROAD SYMBOL)	
R68	71+60	25' LT	D3-201 (SE 34 ST)	
R69	67+43	38' LT	R1-1 (STOP)	
R70	67+43	38' LT	COB TYPE 2 MOD (W LK SAMMAMISH PKWY SE)	
R71	67+43	38' LT	COB TYPE 1 (SE 34 ST)	
R72	67+43	38' LT	(BIKES ON SHOULDER LOOK BOTH WAYS)	
R73	15+64	42' LT	(NO LEFT TURN)	
R74	36+83	37' LT	R1-1 (STOP)	
R75	36+83	37' LT	(BIKES ON SHOULDER LOOK BOTH WAYS)	
R76	69+78	18' RT	R2-1 (SPEED LIMIT 30)	
R77	57+85	--	W11-2 (PEDESTRIAN CROSSING)	ILLUMINATED SIGNS, 4 EACH, SALVAGE

NOTE: REMOVE SIGN POST UNLESS OTHERWISE NOTED.

**CALL 48 HOURS BEFORE YOU DIG
1-800-424-5555**



08/05/2012 2:33pm I:\25\2008\010 WLSIP Bellevue\Design\3810-C51.dwg

NO.	DATE	BY	APPR.	REVISIONS

Approved By

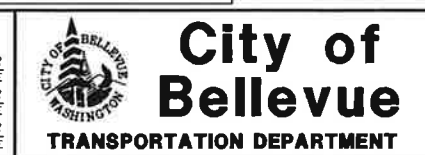
TRANSPORTATION DESIGN MANAGER DATE _____

PROJECT MANAGER DATE _____

RTY DESIGNED BY JUNE 2012 DATE _____

WAC DRAWN BY JUNE 2012 DATE _____

MJV CHECKED BY JUNE 2012 DATE _____



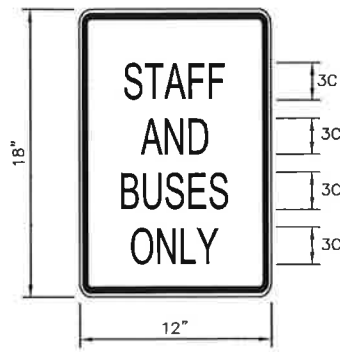
Reid Middleton

728 134th Street SE Suite 200
Everett, Washington 98204
Ph: 425 741-3000

WEST LAKE SAMMAMISH PARKWAY IMPROVEMENTS PROJECT - PHASE 1

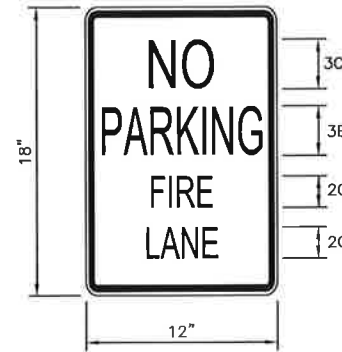
CHANNELIZATION AND SIGNING SCHEDULE

CS9 **SHT 81 OF 108**



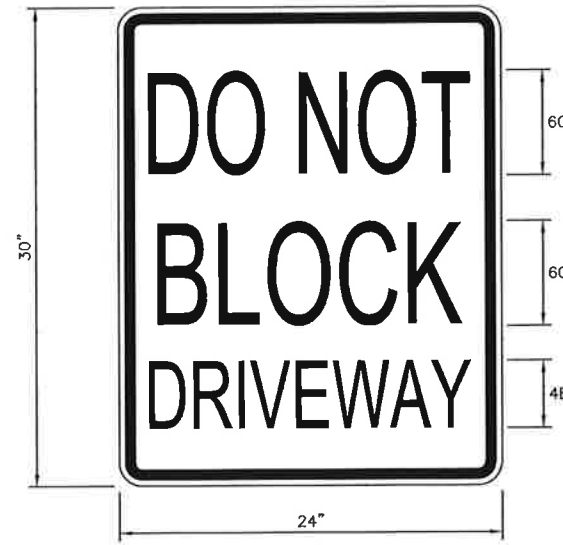
S18

1 R7-101 MOD
NOT TO SCALE



S19

2 R7-301 MOD
NOT TO SCALE



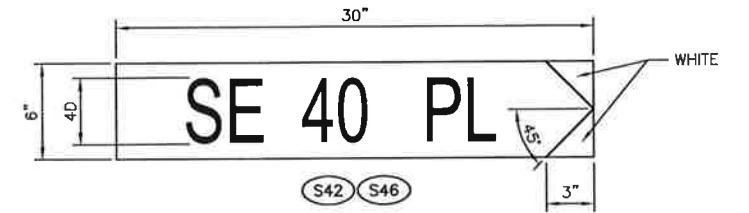
S27

3 R10-7 MOD
NOT TO SCALE



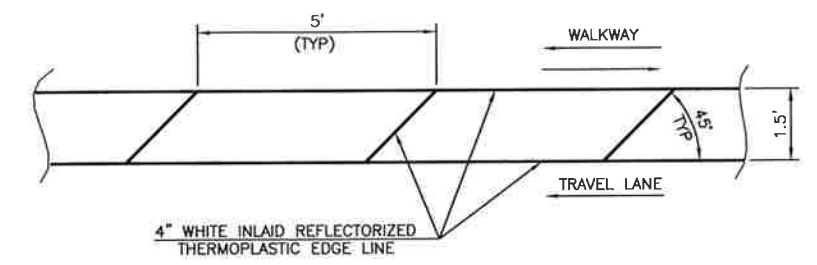
S56 S59 S60 S71 S90

4 R7-402 MOD
NOT TO SCALE

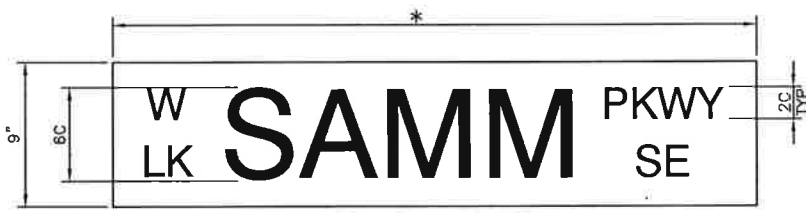


S42 S46

5 COB TYPE 1 MOD
NOT TO SCALE



DETAIL - NO BUFFER CONDITION EDGE STRIPING
NOT TO SCALE



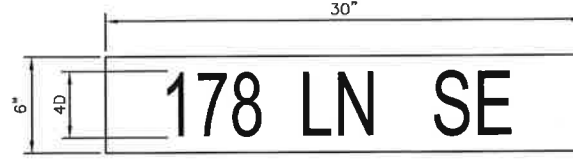
S24 S44 S68 S85

* SIGN WIDTH PER WSDOT SIGN FABRICATION MANUAL

6 COB TYPE 2 MOD
NOT TO SCALE



S25



S38



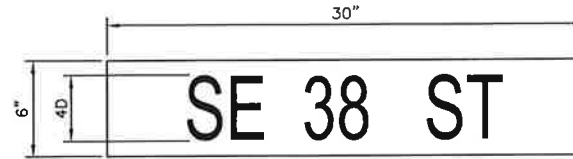
S43



S39 S41 S45



S47



S69



S13

* SIGN WIDTH PER WSDOT SIGN FABRICATION MANUAL

7 D3-102
NOT TO SCALE

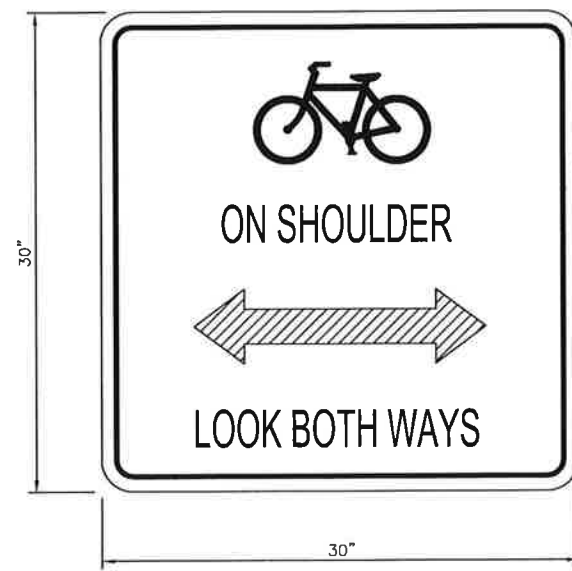


S47



S86

8 COB TYPE 1
NOT TO SCALE



S51A S66A S87A

9 SPECIAL PATHWAY
NOT TO SCALE



CALL 48 HOURS BEFORE YOU DIG
1-800-424-5555

08/05/2012 2:33pm \\12512008\010 WLSIP Bellevue\Design\S810-C51.dwg

NO.	DATE	BY	APPR.	REVISIONS

Approved By			City of Bellevue TRANSPORTATION DEPARTMENT		WEST LAKE SAMMAMISH PARKWAY IMPROVEMENTS PROJECT - PHASE 1	CHANNELIZATION AND SIGNING SCHEDULE CS10			
TRANSPORTATION DESIGN MANAGER	DATE						KTYK DESIGNED BY JUNE 2012 YAC DRAWN BY JUNE 2012 MJK CHECKED BY JUNE 2012	708 13th Street SE, Suite 200 Everett, Washington 98204 Ph: 425 741-3000	SHT 82 OF 108
PROJECT MANAGER	DATE								