

# 41.5 - Tract B

Spring 2001 orthophoto  
10ft contour interval



This map is a graphic representation derived from the City of Bellevue Geographic Information System. It was designed and intended for the City of Bellevue staff use only. It is not guaranteed to survey accuracy. This map is based on the best information available on the date shown on this map. Any reproduction or sale of this map, or portion thereof, is prohibited without express written authorization by the City of Bellevue.

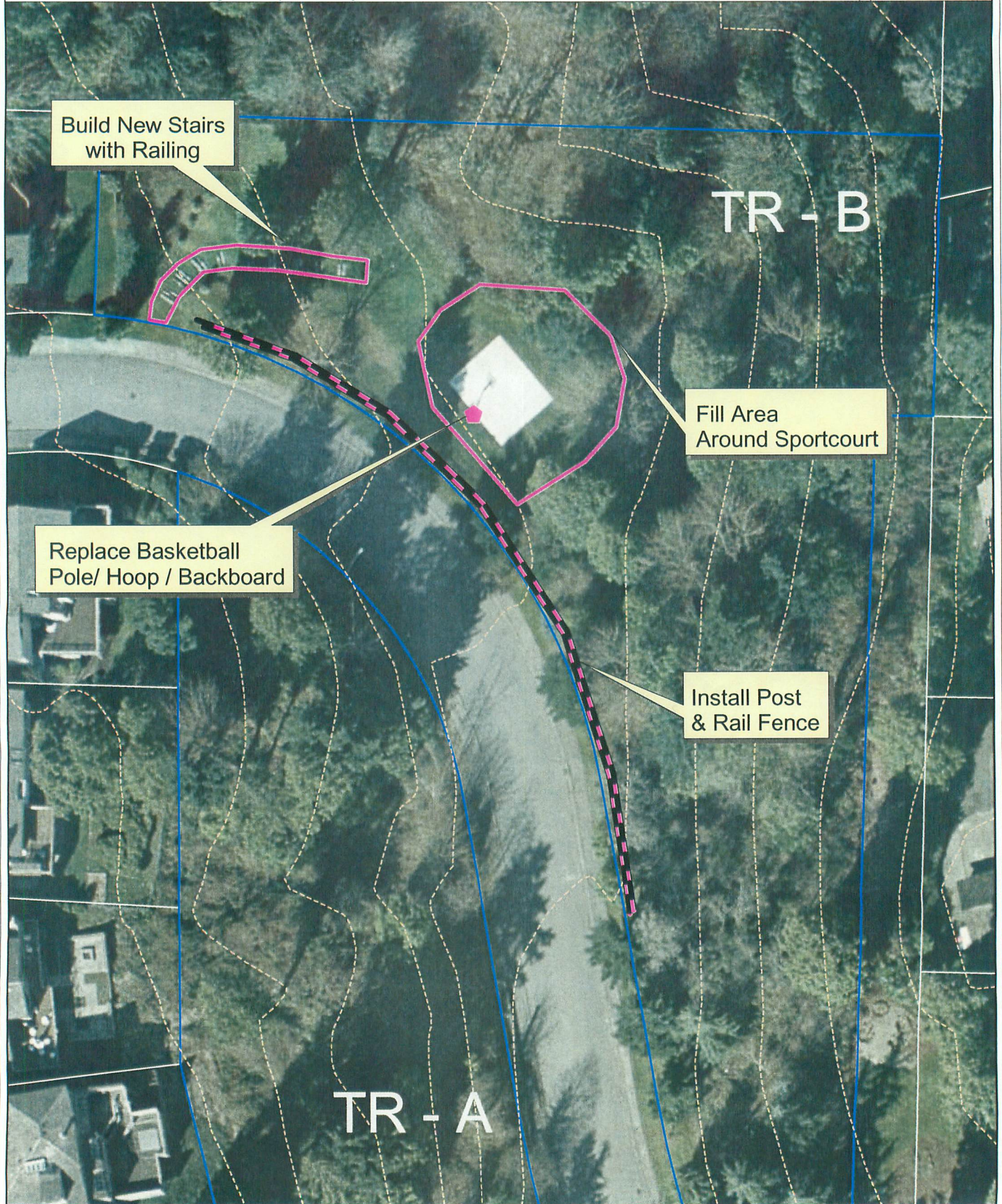
NOTE: If you have specific questions concerning information contained on this map, please contact the sponsoring department as shown on this map.

This material is owned and copyrighted by the City of Bellevue.

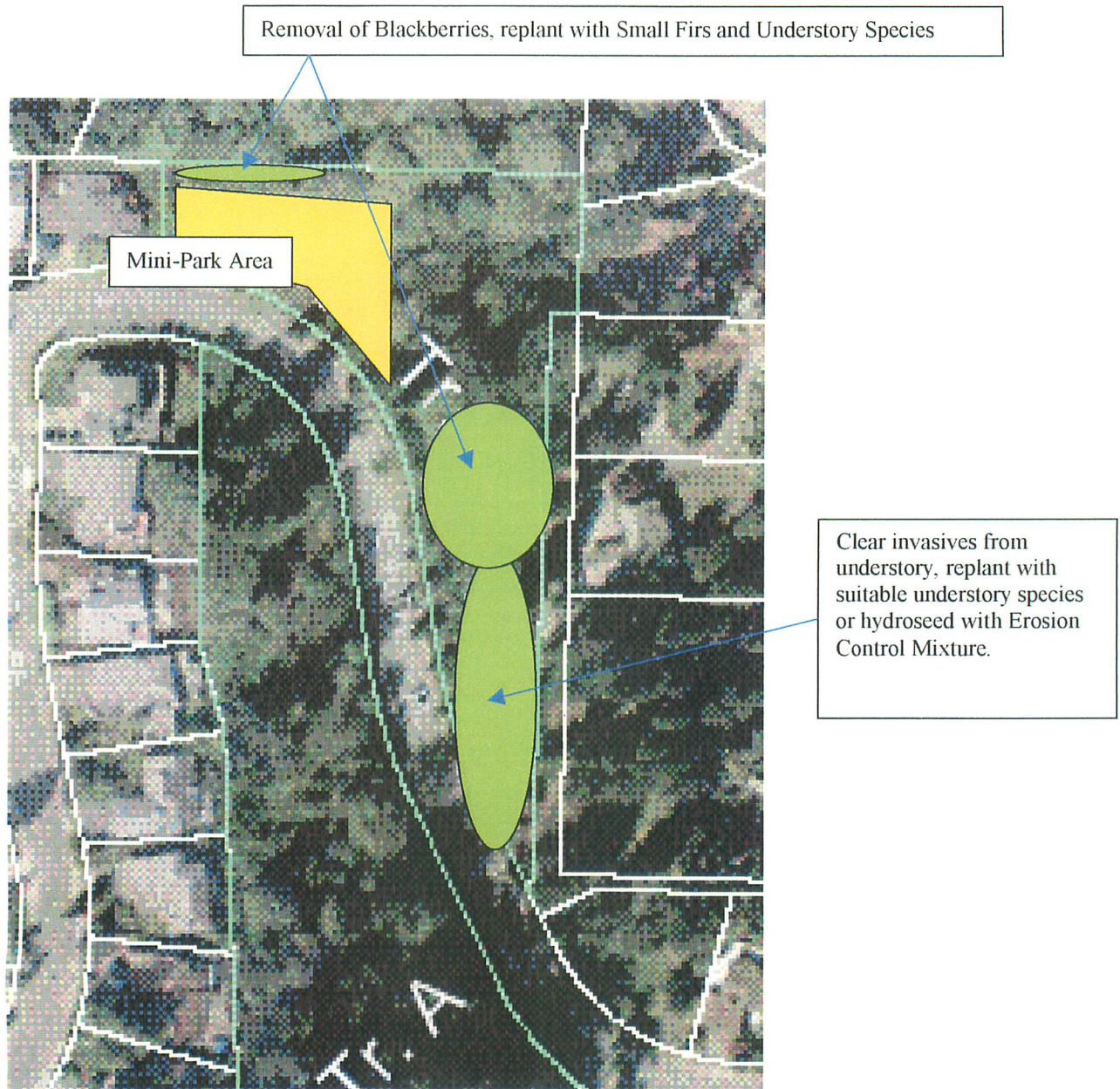


## Playground - Proposed Improvements

Contingent upon City Council & 45.1 Review and Approval



## Addition: 41.5 Tract 'B' Enhancements



41.5 Tract B: Enhancement opportunities within this tract are the removal of Blackberries and other invasives in indicated areas. Along the Northern edge and within the center of the parcel, it is recommended that the area be replanted with some small conifers and understory species. The area within the Southern portion of this tract contains a previously formal landscape setting consisting mainly of Deodara Cedars that are overgrown with invasive species. It is recommended that this area be cleared of the invasive species and replanted with suitable understory species or it could be hydroseeded with an erosion control mixture if the formal landscape look is the desired effect for this area.